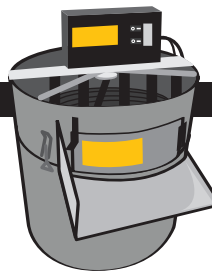




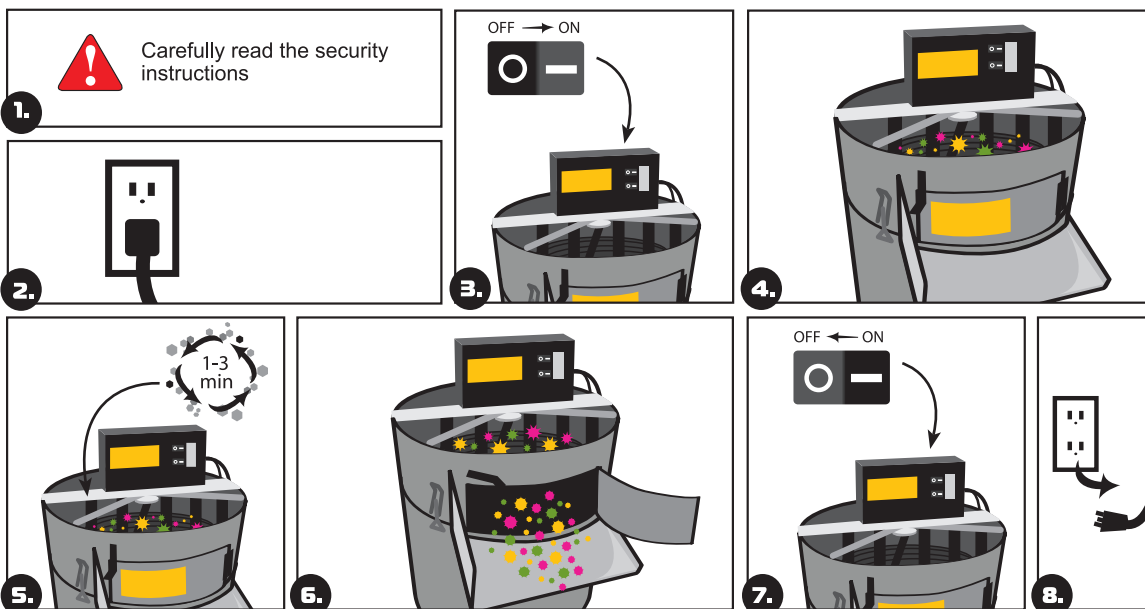
THE TRIMPRO ROTOR IS DESIGNED TO BE USED WITH FRESHLY HARVESTED PLANTS.

USER INSTRUCTIONS

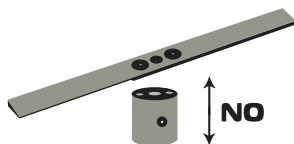
- Carefully read the security instructions (see Warnings ⚠) before using the machine.
- Plug the machine into an electrical outlet.
- Turn on the machine using the two ON/OFF switches.
- Fill the upper container with freshly harvested plants without branches.
- Let the plants move around in the machine for 1 to 3 minutes or until the desired cut is obtained.
- Open the exit door and keep it open until the upper container is empty. REPEAT steps 4 to 6 as needed.
- Frequently remove the accumulation of plants under the machine. The accumulation should never reach the motor in order not to obstruct the motor ventilation.
- Turn off the machine using the two ON/OFF switches.
- Unplug the machine from the electrical outlet.



If the top motor has to be stopped DO NOT USE YOUR HANDS as this may burn the motor. Turn off the motor using the OFF switch instead.



MAINTENANCE



In order to facilitate the trimming, clean both sides of the grate and blade frequently with isopropyl alcohol on a cloth. This must be done when the machine is not running. Sharpen the blade when necessary noting to never remove the blade from the hub. See sharpening instructions beside.

FOR INFORMATION OR TO ORDER

Visit: www.trimpro.ca • Contact: info@trimpro.ca • Call (Canada): +1-450-349-0811

Patents: CAN: 2.470.370 USA: 7.168.643 AUS: 2004269786 • Patent pending: EUR: 04761713.9 CE standard

! WARNING: WHEN THE MACHINE IS RUNNING:

- Never place your fingers or the gloves or any other body part in contact with the grate or blades.
- Safety glasses and gloves are required at all time. Grates have to be tight enough so they can't get inside the grate slots. A loose glove is dangerous, beware!
- Never apply pressure on the grate.
- Do not use scissors, knives or any instrument above the grate.

ADJUSTMENT OF THE BLADES HEIGHT

To adjust the height of the blades, follow the steps:

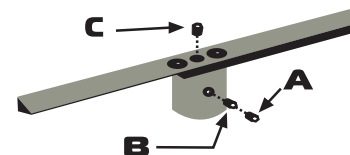
- Completely remove the "A" screw (blocking screw), then loosen the "B" screw (tightening screw). Turn the "C" screw (adjustment of the height screw). To raise the blades, turn clockwise. To lower the blades, turn counterclockwise.
- Apply pressure on the center of the blades to be sure they are well seated on the shaft.
- Re-tighten the "B" screw.
- Verify the height of the blades is OK (it should not touch the grate). If not, return to step 1.
- To finish, put back and tighten the 'A' screw.

NOTE: The "A" and the "B" screws should always be aligned with the flat side of the motor shaft

! CAUTION

For security reasons, we recommend to keep a distance of at least 1/8 of an inch (3mm) between the grate and the blades.

ADJUSTMENT SCREWS



- A. Blocking screw (Allen key 1/8")
- B. Tightening screw (Allen key 1/8")
- C. Height adjustment screw (Allen key 3/16")

LOWER AND RAISE THE BLADE



SHARPENING

- Remove the 2 set screws located in the hole on the side of the aluminum hub (see "Adjustment screws").
- Remove the blades and the hub in one piece from the motor shaft.
- Clean the blades with isopropyl alcohol on a cloth.
- Use a grindstone to sharpen the blade.
- Put a gentle pressure using the bottom of the blades on the grindstone at the sharpening angle desired.
- Pass the blades on the grindstone with a movement from left to right and from right to left until each blade is properly sharpened.
- Put back the blades and the aluminum hub on the motor shaft.
- Put back the 2 set screws in the hole on the side of the aluminum hub. Make sure these set screws are aligned with the flat side of the motor shaft.

To be used in accordance with all applicable laws and regulations. The manufacturer does not accept any responsibility for damages caused to or by the TRIMPRO ROTOR which is the result of improper use or assembly.